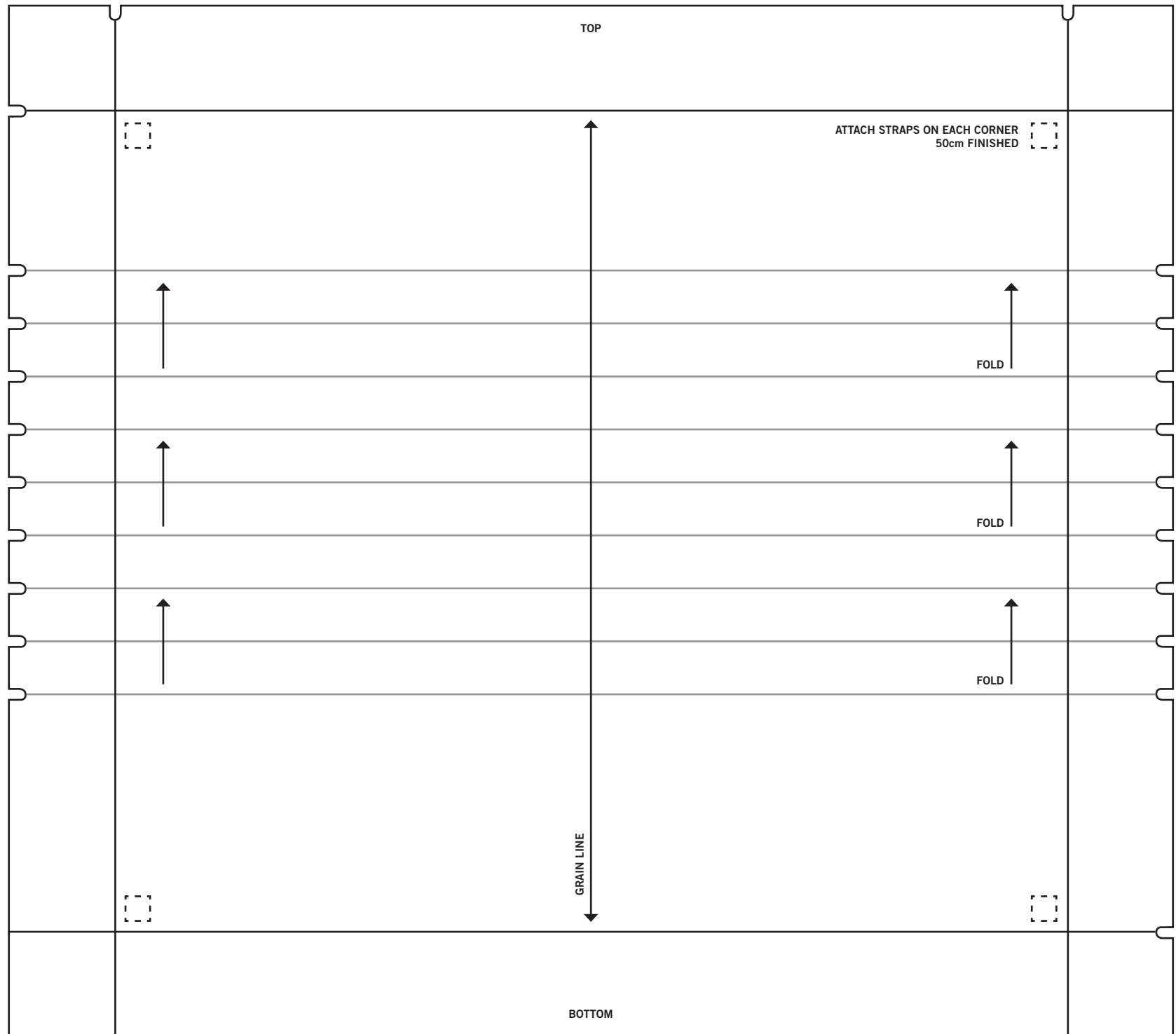


INSTRUCTIONS

1. Wash the A4 size fabric in 30 degrees
2. Press the fabric with an iron
3. Pin the pattern to the fabric and cut out ensuring you snip the fabric on all notches
4. Fold the fabric following the pattern to create 3 pleats in total
5. Stitch to secure the pleats at 0.7cm from edge of the fabric
6. 1cm double turn side edges and stitch to hide the raw edge
7. Attach the ties in all 4 corners
8. 1cm double turn top and bottom edges and stitch to hide the raw edge
9. Diagonally cut the ribbon ends to prevent them fraying



C H R I S T O P H E R K A N E

This face mask is not meant to replace a surgical face mask, it is intended as a contingency plan for members of the public and is not fit for medical use.